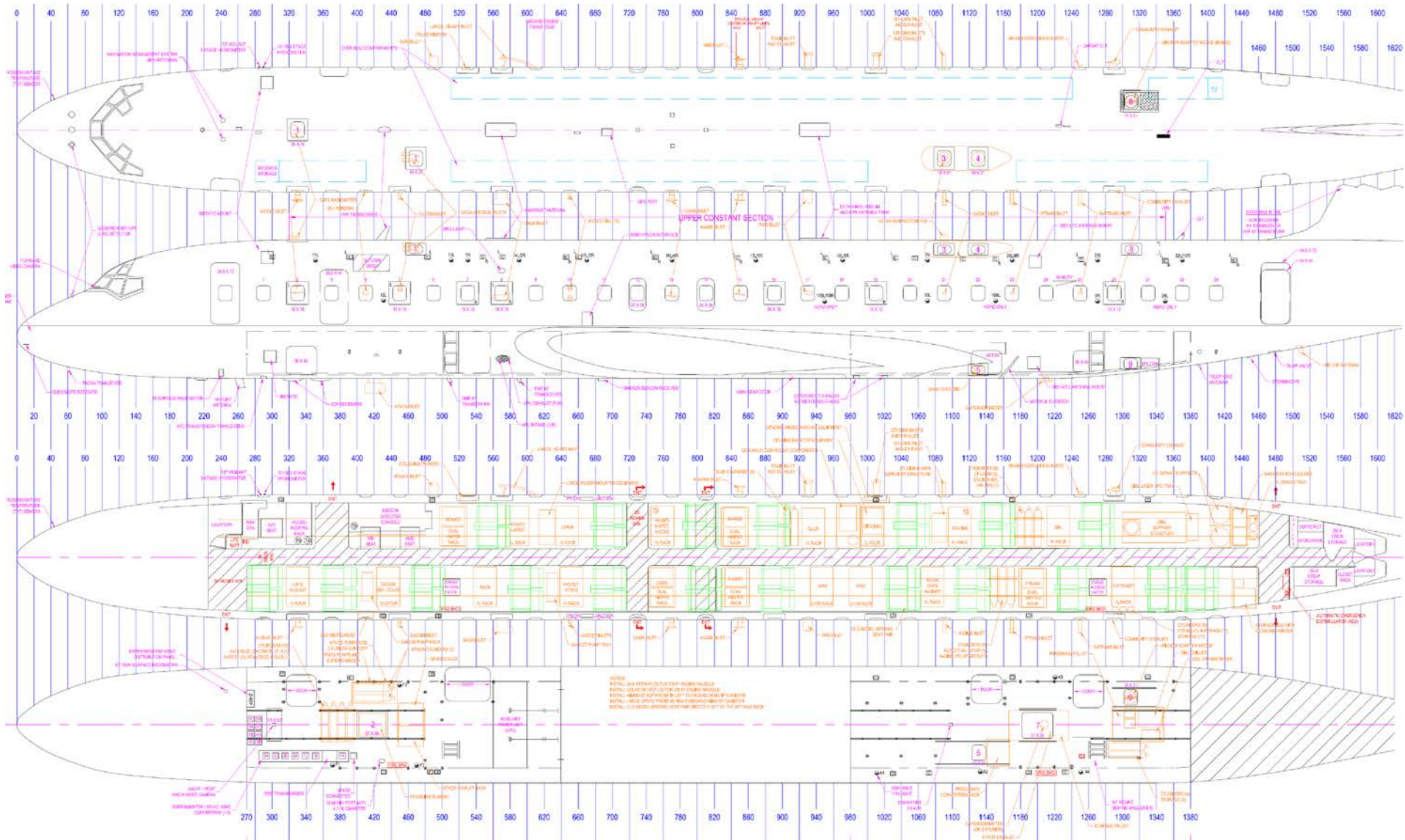


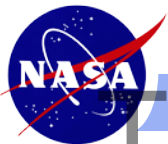
# Preliminary DC-8 Floorplan



This information is not finalized

# Some Open Items

- Korean Instruments
  - Need to identify/design/build appropriate inlets
  - Close on remaining instrument requirements (rack space, layout, hazards, etc.)
  - Proposed naming scheme (K-XXX)
- Korean instruments shipment to US?
- Removing Korean instruments in Korea prior to return transit
  - Should be doable, but need to close on instrument details
  - This would involve depopulating the racks piece-by-piece while remaining on the aircraft and capping any inlet/exhaust plumbing
  - Expectation is that it could be done in a single day



This information is not finalized

# DC-8 Schedule

## March/April/May 2016

	Sunday	Monday	Tuesday	Wednesday	Thursday	Friday	Saturday
M A R	20	21	22	23 Begin KCEAS, DACOM, DLH, COLAS, NOxyO3, DIAL Install	24	25 RDO	26
	Instrument Upload						
M A R	27	28	29 Begin SAGA, AVOCET, ATHOS, LARGE Install	30	31 Begin CAMS, K-AMS, HD-SP2, K-SP2, K-CCN, HR-AMS Install	1	2
	Instrument Upload						
A P R	3	4	5 Begin WAS, 4STAR, CAFS, K-CIMS, TD-LIF, CIT-CIMS Install	6	7 Begin PTR-MS, K-PTR- MS, GT-CIMS Install	8 RDO	9
	Instrument Upload						
A P R	10	11	12	13	14	Weight + Balance Power check Cabin Pressure Ck	16
	Instrument Upload						Lidar Calibrations
A P R	17	18 Shakedown Flight	19	20 Local Test Flight	21	22 RDO	23
	24	25 Local Test Flight	26	27	28	29	30 Transit to Korea

This information is not finalized